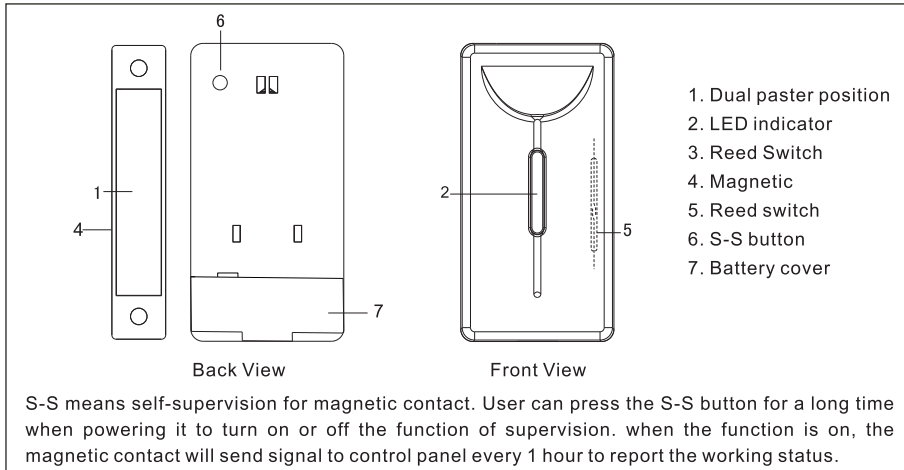


## Wireless Magnetic Switch

This magnetic switch adopts magnetic control theory, which is used for doors, windows and other places. It transmit site alarm or status by wireless way.

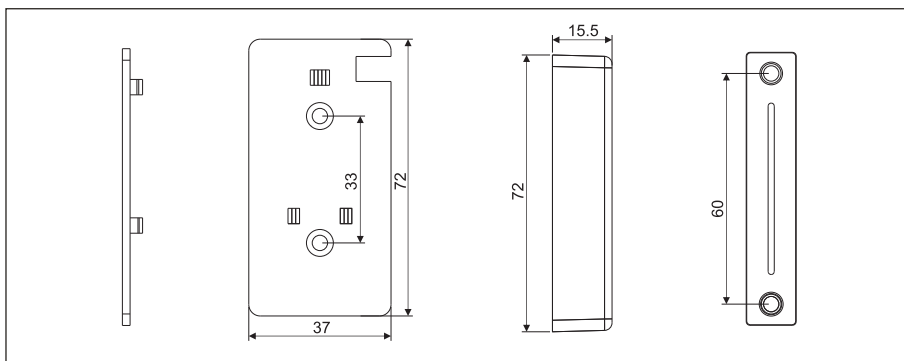
### GENERAL VIEW



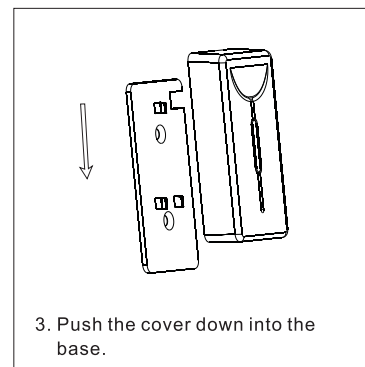
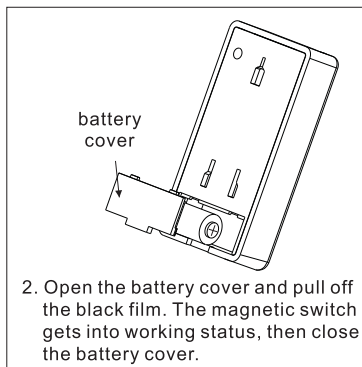
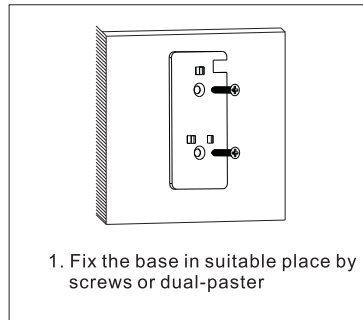
### TECHNICAL PARAMETERS

Operating Voltage	DC 12V ( 23 A*1 battery)
Operating current	Static current:≤10 μA (DC 12V)
	Working current:≤17mA(DC 12V)
Low-voltage alarm	6V ± 0. 5V
Active gap	≥14 mm
Operating temperature	-10℃ ~ +55℃
Installation mode	Affix to the door frame by dual-paster or screws
Transmitting power	≤10dB
Transmitting frequency	868MHZ

### INSTALLATION DIMENSION



## INSTALLATION DIAGRAM



## INSTALLATION DESCRIPTION

1. Install the magnetic part in movable doors or windows, and the reed switch in the frames of doors and windows.
2. Those two parts should be installed completely parallel. The distance between them should be less than 5mm, 0mm is the best. If the distance is larger than the active gap, the magnetic switch will be out of use.
3. Magnetic switch should be mounted in place which is hard to reach.

## PRODUCT SPECIFICATION

1. Remove the bracket and the battery cover, pull out the black insulation film. Then LED flashes twice, the magnetic switch enters working status.
2. The switch will check the voltage when powering on. If the voltage is lower than  $6\pm 0.5V$ , the LED flashes, the switch sends signal to the control panel within 10s, after that it will send signal to the control panel every 1 hour.
3. When intrusion happens, the switch is triggered and sends signal to the control panel with LED flashing.
4. Registry is necessary for first use. Power on the magnetic switch for normal use. During code learn, move the magnet and reed switch separately to trigger signal to the control panel with LED on. When the control panel receives successfully, registry is finished.
5. S-S(Self-Supervision) button: it enables you to turn on or off the function of self-supervision. With the function on, it will send the networking signal to the control panel every 1 hour to report the working status. It is set ON as default. User can press the S-S button on the rear cover for a long time when re-powering the product, until LED on to cancel for battery save (when cancellation succeeds, LED flashes quickly for 6 times.). While the function is turned off, you can also press the button for a long time to turn it on.

## NOTICE

1. Due to the low power consumption, please wait for 5 seconds to re-power the magnetic switch after pulling out the battery.
2. Please correctly install and use this product according to the manual.
3. Avoid installing in metal doors and windows.
4. This product can reduce the possibility of accident, but can not guarantee absolute safety due to some other unexpected factors. Therefore, besides using the detector correctly, pls take all necessary periodic test and enhance safety consciousness in daily life.